



**FOUR CONTINENTS**  
FIGURE SKATING CHAMPIONSHIPS®

**2020**  
SEOUL  
KOREA

**February 4 – 9, 2020**

**Seoul / Republic of Korea**

**FIRST INFORMATION**



The Korea Skating Union and the City of Seoul would like to welcome skaters, officials, judges and guests from all ISU members to the beautiful city of Seoul, Korea, site of the ISU Four Continents Figure Skating Championships® 2020.



In this document, you will find information about Seoul City, the venue, hotels and other useful information to help you prepare your stay at the ISU Four Continents Figure Skating Championships® 2020.

We hope you find this information helpful and your questions will be welcomed.

# Introduction of Seoul

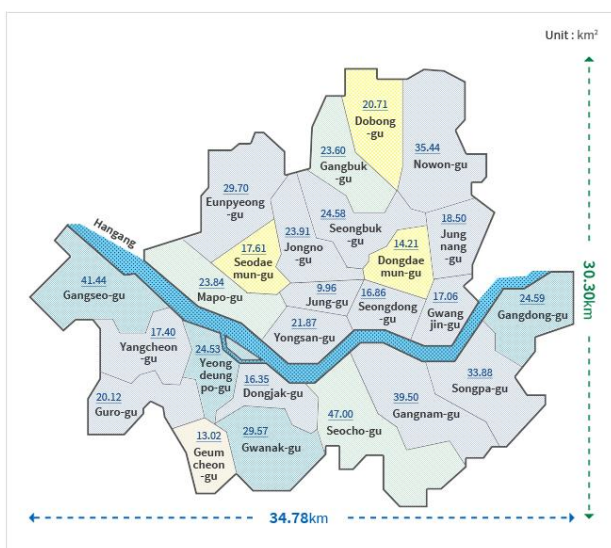
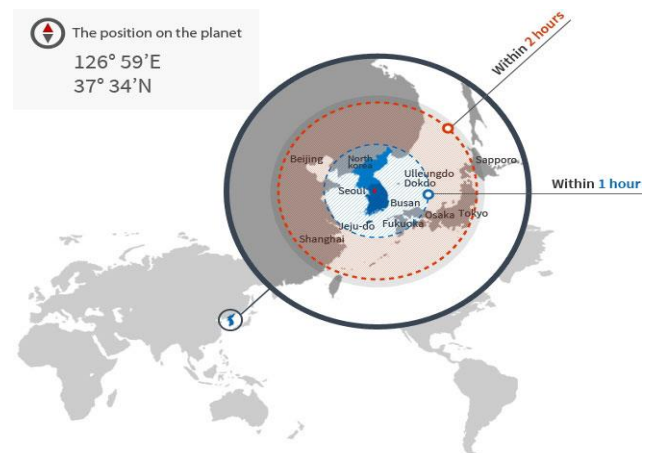
## History of Seoul

Located at the heart of the Korean Peninsula, Seoul has always been an important strategic point throughout the centuries in terms of defense and the economy, from one kingdom to the next. The three kingdoms of Baekje, Goguryeo, and Silla (BCE 57 – CE 688) all fought over the area that is now Korea's capital. Indeed, whichever kingdom claimed Seoul became the dominant power. The Joseon Dynasty (1392 - 1910) declared Seoul its capital, a role that Seoul still playing.

## Location

### Seoul, the Gateway to Asia and Europe

The Korean Peninsula lies in the center of Northeast Asia. The coordinates of its capital, Seoul, are  $37.34^{\circ}$  N and  $126.59^{\circ}$  E, putting it in close proximity to the Yellow Sea. Seoul is within a three-hour flight from 43 cities with populations of over one million people. Korea's location between China and Japan has been a great geographical advantage for the nation.



The Hangang (River) flows horizontally across Seoul, dividing the city into two sections lying north and south of the river. There are 25 autonomous districts and 423 administrative “dong” units in Seoul. The city covers 0.28% of the entire peninsula (or 0.61% of South Korea), and spans an area 30.30 km north-to-south and 34.78 km west-to-east.

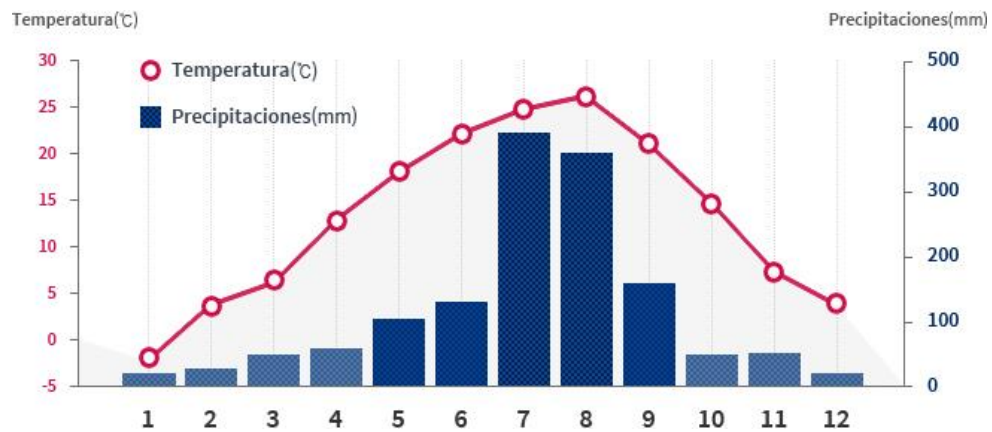
## Climate of Seoul

Like the rest of Korea, Seoul has four distinct seasons, which means the landscape changes considerably throughout the year. This unique climate is deeply embedded within Korea's cultural fabric.



### Winter in Seoul

Due to the strong influence of icy air from the North, winter is quite cold in Seoul. This is when public areas all over Seoul open skating rinks. The days become markedly shorter, and you will see Seoulites busily going about their business wrapped up against the cold under myriad flashy neon lights.



## Population of Seoul

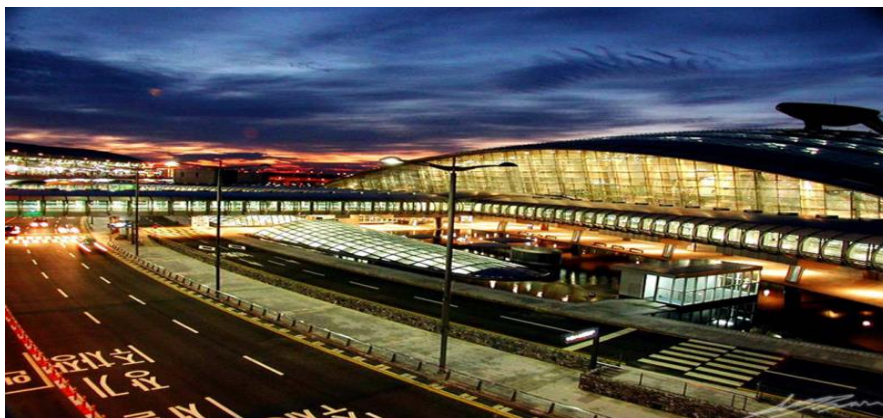
Seoul has a population of 10,054,979 people. [2019 (1/4) Statistic]





# Transportation

## Arrival & Departure transportation from airport to hotel



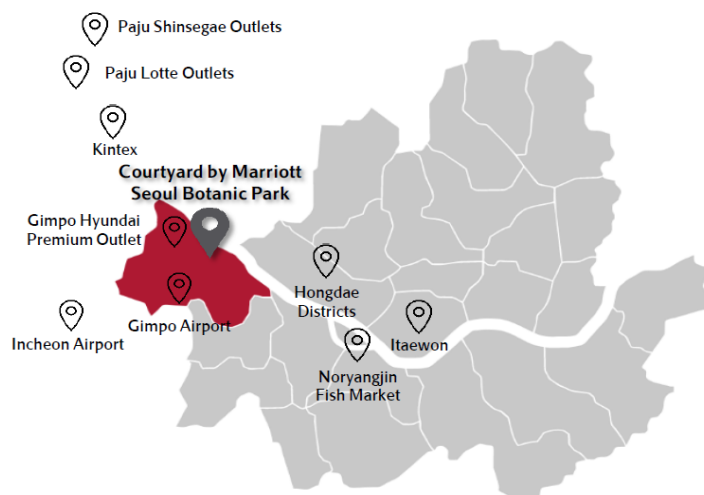
All participants will arrive at either Seoul Incheon International Airport or Gimpo International Airport and can find the Information Desk with the sign of ISU Four Continents Figure Skating Championships 2020, Seoul, Korea, in front of the arrival gates at the 1<sup>st</sup> floor of the airport.

The OC Staffs of the transportation Team will meet you and arrange the transportation for you or your team. Chaperones and Media may be asked to pay for the shuttle bus service from Airport to hotel and price is 15,000 KRW [one-way].

The OC will provide the transportation from the airport to the Courtyard Seoul Botanic Park hotel, Ramada Encore Seoul Magok Hotel and Golden Seoul Hotel.

It will take approximately 40 minutes from the Incheon International airport to the official hotel, and 20 minutes from the Gimpo airport to the official hotel.

There may be a waiting period in the airport in order to efficiently coordinate transportation need.



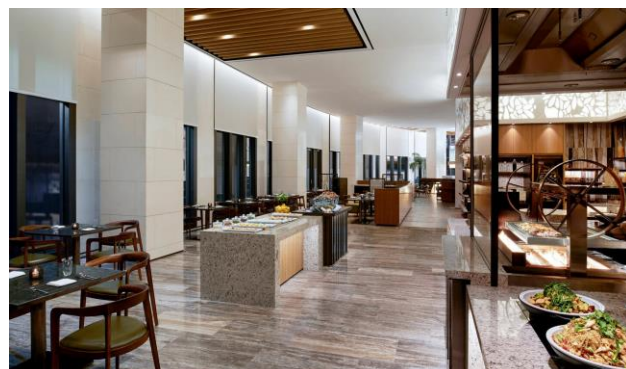
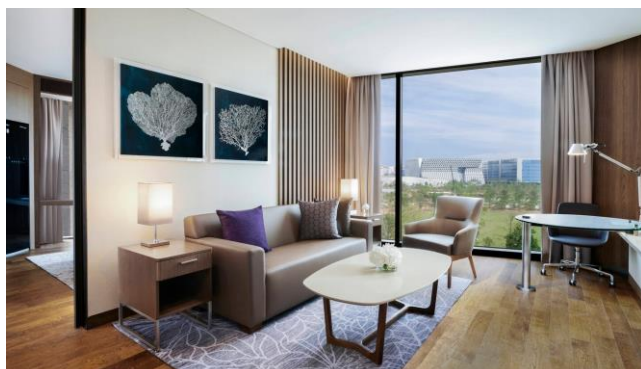
Located in the heart of Magok district, Gangseo-gu Courtyard by Marriott Seoul Botanic Park is the perfect spot for international travelers.

Having a great accessibility to public transportation as Magongnaru subway station(Line 9/Airport railroad is 100 meters from hotel giving direct access to the airport and city-centered and Gangnam area in Seoul.

Gimpo International Airport in 10 minutes from hotel, 30 minutes from Incheon International Airport, Kintex is 20 minutes from hotel by car.

# Hotels

## Courtyard Seoul Botanic Park (ISU, Teams & Event Officials)



Address: Magokjungang 12-ro, Gangseo-gu, Seoul07788 Republic of Korea  
Web: [www.marriott.com/selcs](http://www.marriott.com/selcs)  
Tel: +82 2 6946 7000  
Fax: +82 2 6946 7001

**Rates:** Single Room: 150 USD  
Twin Bed Room: 180 USD

All rates are per room/per night, including breakfast & local taxes.

### TERMS OF RESERVATION & PRE-PAYMENT

All requests for reservations must be made to the Organizing Committee by October 1<sup>st</sup>, 2019 latest. The reservation will be confirmed directly through the Organizing Committee. At the same time, the Organizing Committee will inform about the payment procedure.

A pre-payment of 50% need to be paid by the participating members by November 15th, 2019.

Changes and cancellations shall be made in writing and directly to the Organizing Committee

### Cancellation & refund policies

Refund of deposit 100%:	Up to December 27 <sup>th</sup> , 2019
Refund of deposit 50%:	From December 28 <sup>th</sup> , 2019 until January 14 <sup>th</sup> , 2020
No refund:	From January 15 <sup>th</sup> , 2020

## MEAL SERVICE

### Location and Service hours:

Breakfast:	06:00-10:00	Garden Kitchen 1 <sup>st</sup> Floor
Lunch:	11:30-14:30	Forest Ballroom 2 <sup>nd</sup> Floor
Dinner:	17:30-22:00	Forest Ballroom 2 <sup>nd</sup> Floor (On Feb 9 <sup>th</sup> at Garden Kitchen 1 <sup>st</sup> Floor)
Late Dinner: (On days with evening Competitions only)	22:00-00:30 22:00-23:30	Forest Ballroom 2 <sup>nd</sup> Floor (On Feb 6 <sup>th</sup> & 7 <sup>th</sup> ) Forest Ballroom 2 <sup>nd</sup> Floor (On Feb 8 <sup>th</sup> )

### Price of Meal Vouchers:

Lunch:	50 USD
Dinner/Late Dinner:	50 USD

## Hotel for Chaperones

### Ramada Encore Seoul Magok

Address: 161-1 Magokjungang-ro, Gangseo-gu, Seoul, Republic of Korea

Tel: +82 2 2162 9000, Email: [rs@ramadaencore-seoulmagok.com](mailto:rs@ramadaencore-seoulmagok.com)

Homepage: [http://www.ramadaencore-seoulmagok.com/view/index.do?SS\\_SVC\\_LANG\\_CODE=ENG](http://www.ramadaencore-seoulmagok.com/view/index.do?SS_SVC_LANG_CODE=ENG)

Rate: 100 USD ~ 150 USD (All rates are per person/per night, including breakfast & local taxes)

## Hotel for Media

### Seoul Golden Hotel,

Address: 663 Gonghangdae-ro, Gangseogu, Seoul 157-040 Korea

Tel: +82 2 3397 2002, Email: [book@goldenseoul.com](mailto:book@goldenseoul.com), Homepage: <http://www.goldenseoul.com>

Rate: 100 USD ~ 150 USD (All rates are per person/per night, including breakfast & local taxes)



# Venue

## Mokdong Ice Rink

939 Annyangcheon-ro, Mok 1(il)-dong,  
Yangcheon-gu, Seoul, Republic of Korea

The Mokdong Ice Rink hosts the Main and Practice rink in the same building.

**Main Rink:** Level 1 floor  
**Practice Rink:** B1 Level



### MATERIAL RESOURCES

- Constructional structure : Steel Concrete Ramenzo (Basement : 1 floor, on the ground : 2 floors)
- Freezing facility : Return activating style DLR system
- Electric facility : 1,950KVA 110k x 6 units
- The others : Central cluster sound equipment

### SCALE OF LINK

- Basement 1:30M x 61M (int'l standard)
- On the ground 1:30M (int'l standard)





# Event Shuttle

The event shuttle bus service will be provided by the OC between the official hotels and the ice rink for accredited people as well as Chaperones with a bus permit. The shuttle will run on a 30 min interval from the official hotels to the ice rink. The first bus will reach the ice rink at least 1 hour before the start of the first practice session.



**Courtyard Seoul Botanic Park Hotel**

**Mokdong Ice Rink**

**Distance between Courtyard Seoul Botanic Hotel and Mokdong Ice Rink: 10km (24 minutes by car)**

## Accreditation

Accreditations will be done at the following places:

Place: Idea Garden, B1 floor of Marriott Courtyard Hotel  
Clients: ISU Skating Family  
Period of operation: Feb 2<sup>nd</sup>, 2020 ~ Feb 5<sup>th</sup>, 2020

Place: Accreditation Station at ice rink  
Clients: Media, Press, TV, OC and volunteers  
Period of operation: Jan 30<sup>th</sup>, 2020 ~ Feb 9<sup>th</sup>, 2020

# Useful Information

## Business Hours

Business	Weekdays	Saturdays	Sundays and National Holidays
Banks	10 am – 4 pm	Closed	Closed
Government Offices & Organizations	09 am – 4 pm	Closed	Closed
Department Store	10:30 am – 8 pm	10:30 am – 8 pm	10:30 am – 8 pm
Foreign Diplomatic Missions	Vary	Closed	Closed

## Money & Currency

The Currency in Korea is Korean Won (KRW).

Denominations are as follows: 50,000KRW, 10,000KRW, 5,000KRW & 1,000KRW

Coins are as follows: 500KRW, 100KRW, 50KRW & 10KRW

## BANKING & ATM

Cards with the Plus and Cirrus logos are the easiest to use and most widely accepted in Korea. Some places even accept international cards like China Union Pay, Maestro, Electron, and JCB cards.

Banks as well as other sites have ATMs (automatic teller machines), where customers can make withdrawals, deposits, and fund transfers. However, as all ATM transactions require an account with a Korean bank, ATMs are not particularly convenient for international travelers except for getting cash advances on a credit card.

If you have an account with Citibank, however, you can enjoy a more extensive range of banking services.

Just visit a Citibank location nearby for ATM or counter services. Some ATM/CD machines operate 24 hours a day, while others are open from 8 a.m. to 12 a.m.

## Electricity & Voltage

The standard voltage in Korea is 220 volts.



# Event Schedule (subject to change)

Date	Time	Event
Tuesday, February 4	All day	Official Practice
	10:45	ICE DANCE – Technical Panel Meeting
	16:00	PAIRS – Technical Panel Meeting
	16:00	Team Leaders Meeting
	17:30	Medical Meeting
	18:15	LADIES – Technical Panel Meeting
Wednesday, February 5	All day	Official Practice
	09:00	Referee & Technical Controllers Meeting
	10:00	ICE DANCE – Initial Judges Meeting
	12:00	PAIRS – Initial Judges Meeting
	12:15	MEN – Technical Panel Meeting
	16:00	LADIES – Initial Judges Meeting
	20:00	ISU and Judges Dinner
Thursday, February 6	09:30	MEN – Initial Judges Meeting
	11:00	ICE DANCE – Rhythm Dance
	14:15	PAIRS – Short Program
	17:15	Opening Ceremony on Ice
	18:05	LADIES – Short Program
Friday, February 7	13:30	ICE DANCE – Free Dance
	17:40	MEN – Short Program
	17:45	ICE DANCE – Technical Panel Review Meeting
Saturday, February 8	09:00	ICE DANCE - Judges Round Table Discussion
	12:55	LADIES – Free Skating
	18:00	PAIRS – Free Skating
	18:00	LADIES – Technical Panel Review Meeting
	21:00	PAIRS – Technical Panel Review Meeting
Sunday, February 9	08:00	LADIES – Judges Round Table Discussion
	10:15	PAIRS – Judges Round Table Discussion
	11:30	MEN – Free Skating
	16:00	MEN – Technical Panel Review Meeting
	17:30	EXHIBITION
	18:30	MEN – Judges Round Table Discussion
	21:00	Closing Banquet

**Please note: This schedule is subject to change**

# SUMMARY OF DEADLINES

	DEADLINE	to be submitted via	
		Online Registration System	Form
Preliminary Entry Form	01.10.2019	X	
Hotel Request Form Team Leaders, Competitors, Judges	01.10.2019	X	
Hotel Request Form Team Officials, Coaches, Others	01.10.2019	X	
Entry by Name for Competitors	14.01.2020	X	
Entry by Name for Judges	14.01.2020	X	
Entry by Name Delegation Members	14.01.2020	X	
Hotel Reservation	14.01.2020	X	
Travel Details	14.01.2020	X	
Bank Transfer	14.01.2020	X	
Press Information	14.01.2020	X (through ISU Portal)	
Competition Music Information	14.01.2020	X (through ISU Portal)	
Ice Dance Music Information	14.01.2020	X (through ISU Portal)	
Planned Program Content	14.01.2020	X (through ISU Portal)	
Skater Health Care Form	14.01.2020		X (Form 1)
Visa Application Request	a.s.a.p.		X (Form 2)

Payments	DUE DATE
Deadline for 50% deposit for hotel reservations from Federation	15.11.2019
Refund of 100% hotel deposit for cancellations up to	27.12.2019
Refund of 50% hotel deposit for cancellations <b>from December 28, 2019 until</b>	14.01.2020
No refund for cancellations from	15.01.2020
Federation to pay balance of hotel payment <b>latest at</b>	Registration

## Contact Information:

### Organizing Committee

ISU Four Continents Figure Skating Championships 2020, Seoul, Korea

Address: #106 Winter Sports Federation Office, Velodrome BLD.,

Olympic Road, Songpa-gu, Seoul, Republic of Korea

Tel: + 82 2 2203 2018

Fax: + 82 2 423 8097

Email: [oc2020fourcontikorea@gmail.com](mailto:oc2020fourcontikorea@gmail.com)